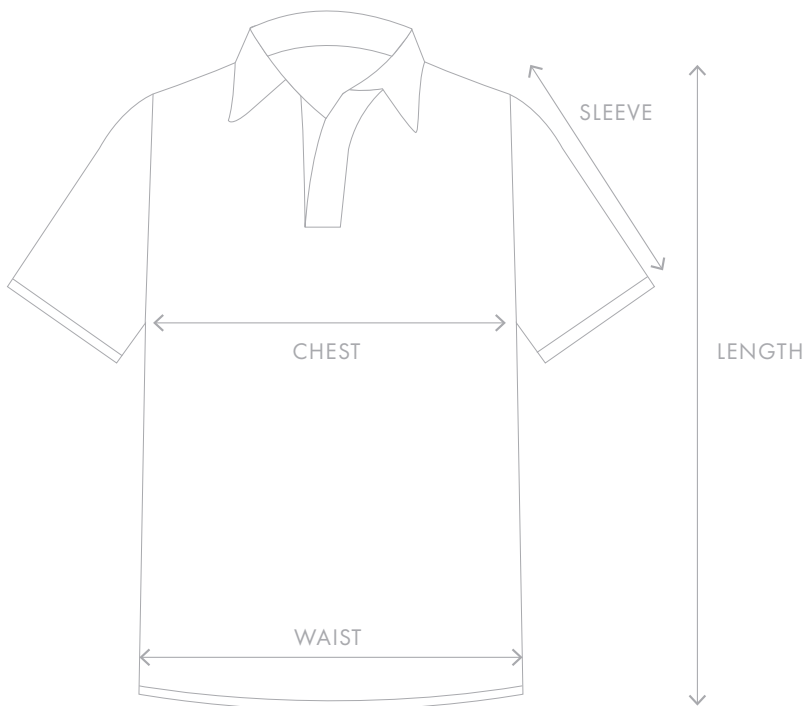


Mens Polo Shirt



- CHEST**  
Measure around the largest area of your bust.  
Tape position should be as close to the under arm position as possible.
- LENGTH**  
Measure from highest point on shoulder to the bottom.
- WAIST**  
Measurement all around your waist.

All measurements are in CM

	XS	S	M	L	XL	XXL
Length	69	71	73	75	77	79
Chest	96	102	108	114	120	126
Sleeve	21.2	21.8	22.4	23	23.6	24.2
Waist	92	98	104	110	116	122

Puffer Vest

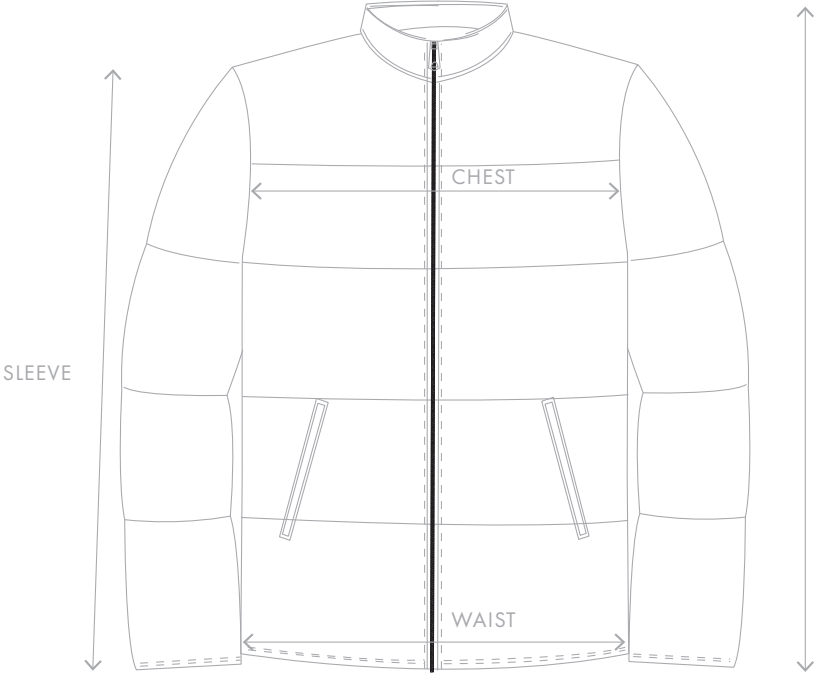


- CHEST**  
Measure around the largest area of your bust.  
Tape position should be as close to the under arm position as possible.
- LENGTH**  
Measure from highest point on shoulder to the bottom.
- WAIST**  
Measurement all around your waist.

All measurements are in CM

	XS	S	M	L	XL	XXL
Length	67	69	71	73	75	77
Chest	109	114	119	124	129	134
Armhole	43	45	48	51	54	57
Waist	104	109	114	119	124	129

Puffer Jacket



- CHEST**  
Measure around the largest area of your bust.  
Tape position should be as close to the under arm position as possible.
- LENGTH**  
Measure from highest point on shoulder to the bottom.
- WAIST**  
Measurement all around your waist.
- SLEEVE**  
Measurement from shoulder down to wrist.

All measurements are in CM

	XS	S	M	L	XL	XXL
Length	67	69	71	73	75	77
Chest	109	114	119	124	129	134
Sleeve	63	65	67	69	71	73
Waist	104	109	114	119	124	129

Mens Quarter Zip



- CHEST

Measure around the largest area of your bust. Tape position should be as close to the under arm position as possible.
- LENGTH

Measure from highest point on shoulder to the bottom.
- WAIST

Measurement all around your waist.
- SLEEVE

Measurement from shoulder down to wrist.

All measurements are in CM

	XS	S	M	L	XL	XXL
Length	64	67	70	73	76	79
Chest	106	112	118	124	130	136
Sleeve	59	60.5	62	63.5	65	66.5
Waist	96	104	110	116	122	128

Mens Business Shirt



**CHEST**  
Measure the whole circumference around your chest.  
Tape position should be 1 cm from the under arm position.

**LENGTH**  
From the highest point on the shoulder, to the lowest point at the hem.

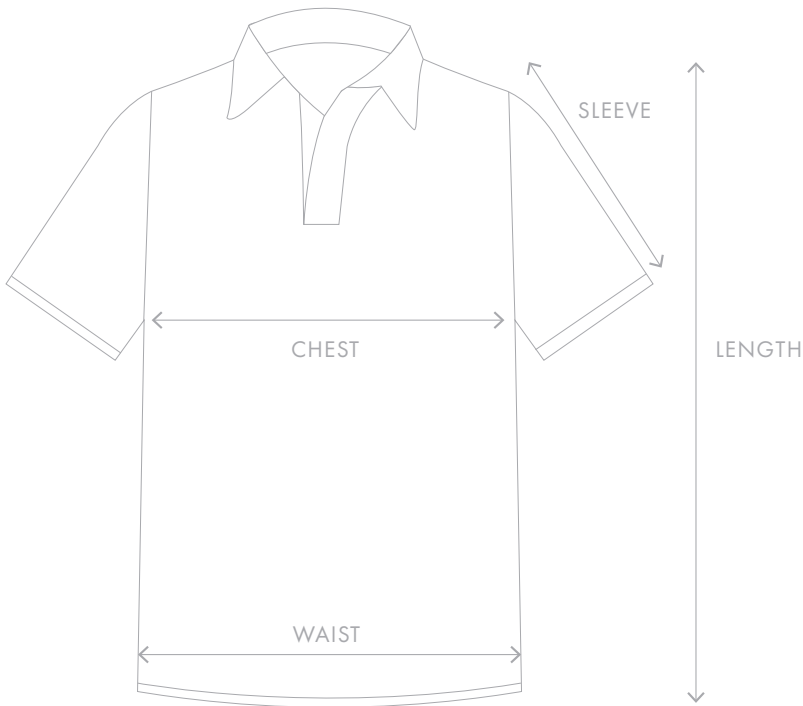
**WAIST**  
Circumference measurement of the waist

**SLEEVE**  
Measurement from highest point of the shoulder down to the bottom of the wrist.

All measurements are in CM

	XS	S	M	L	XL	XXL
Length	71.5	73.5	75.5	77.5	79.5	81.5
Chest	94	100	106	112	118	124
Sleeve	59	60.5	62	63.5	65	66.5
Waist	94	100	106	112	118	124
Shoulder	42	44	46	48	50	52

Womens Polo Shirt



- BUST**  
Measure around the largest area of your bust.  
Tape position should be as close to the under arm position as possible.
- LENGTH**  
Measure from highest point on shoulder to the bottom.
- WAIST**  
Measurement all around your waist.

All measurements are in CM

	6	8	10	12	14	16
Length	58.5	60.5	62.5	64.5	66.5	68.5
Bust	85	90	95	100	105	110
Sleeve	16.2	16.8	17.4	18	18.6	19.2
Waist	79	84	89	94	99	104

## Womens Quarter Zip



### BUST

Measure around the largest area of your bust. Tape position should be as close to the under arm position as possible.

### LENGTH

Measure from highest point on shoulder to the bottom.

### WAIST

Measurement all around your waist.

### SLEEVE

Measurement from shoulder down to wrist.

All measurements are in CM

	6	8	10	12	14	16
Length	60	62	64	66	68	70
Bust	96	102	108	114	120	126
Sleeve	59.3	60.5	61.7	62.9	64.1	65.3
Waist	88	94	100	106	112	118

Womens Shirt



**BUST**  
Measure the whole circumference around your chest.  
Tape position should be 1 cm from the under arm position.

**LENGTH**  
From the highest point on the shoulder, to the lowest point at the hem.

**WAIST**  
Circumference measurement of the waist

**SLEEVE**  
Measurement from highest point of the shoulder down to the bottom of the wrist.

All measurements are in CM

	XS	S	M	L	XL	XXL
Length	60	62	64	66	68	70
Bust	84	89	94	99	104	109
Sleeve	59.3	60.5	61.7	62.9	64.1	65.3
Waist	64	69	74	79	84	89