

COMPANY OVERVIEW

WHO WE ARE

ResourceCo is a global leader in the recovery and re-manufacturing of primary resources, extracting maximum value from materials otherwise destined for landfill.

With operations spanning Australia and South-East Asia, ResourceCo has remained at the forefront of established and emerging markets for recovered materials since the early 1990s.

As a recognised pioneer in the resource recovery sector, we work with governments, communities and multinational companies to progress the circular economy and preserve natural resources for a sustainable future

WHAT WE DO

As the world moves away from a make, use, dispose model towards a circular economy, we are determined to play our role in the recovery, recycling and re-use of products, delivering tailored solutions across a wide range of industry sectors.

ResourceCo processes more than two million tonnes of waste materials annually, repurposing more than 95 per cent to generate energy or to produce high quality products for reuse in the building and construction sector.

Annually we handle over:

- 2,000,000 T of construction and demolition waste
- Supply and produce over 2,000,000 MT of Solid Alternative Fuel (TDF and PEF)

This product guide aims to help you make informed decisions about how we can work together to meet your specific needs.



ALTERNATIVE FUELS

- Processed Engineered Fuel
- Refuse Derived Fuel
- Tyre Derived Fuel



RECYCLING

Incoming materials:

- asphalt, concrete, brick, and masonry
- commercial and industrial materials
- construction and demolition materials
- tyres and conveyor belts.

Outgoing product supply:

- aggregate, screenings, and asphalt-based products
- fixed and mobile pre-mixed concrete batching
- bulk and engineered fill.



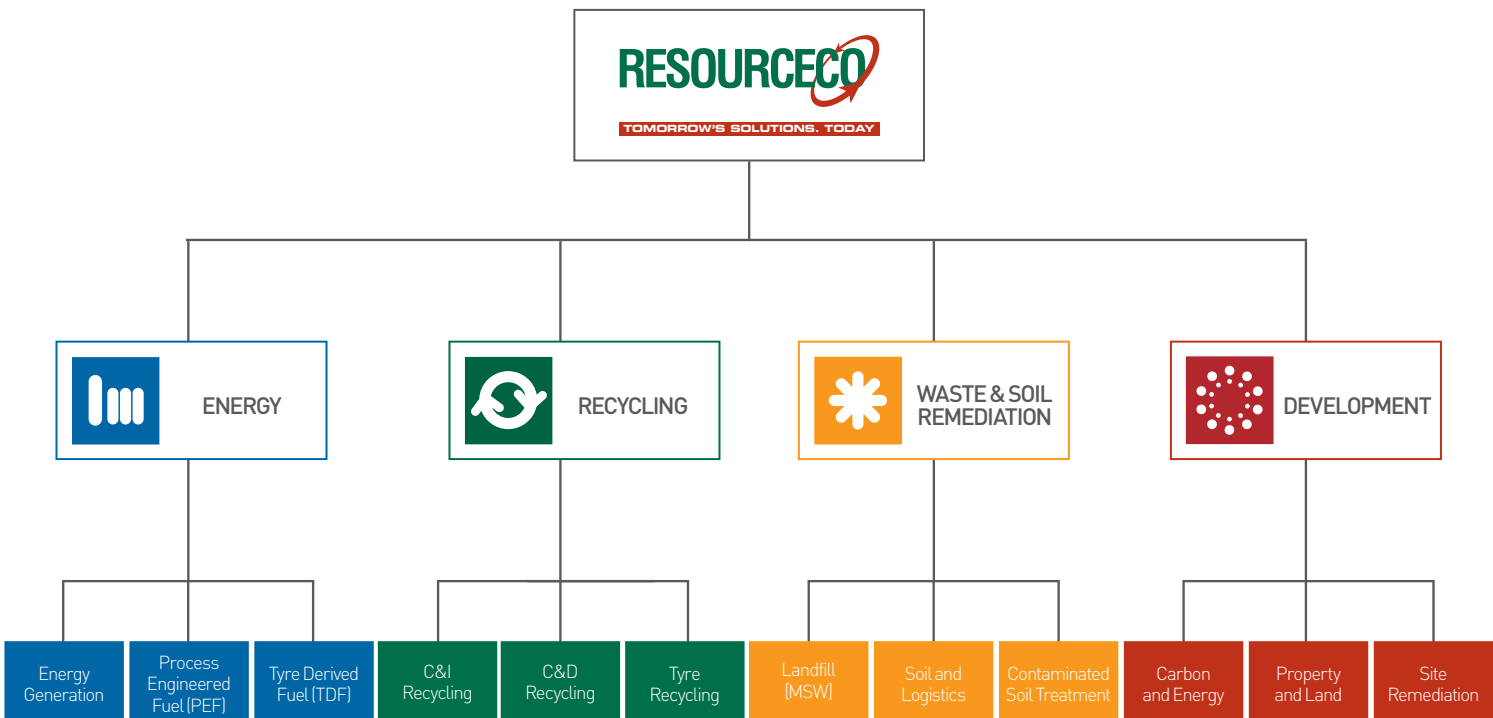
SOIL AND WASTE MANAGEMENT

- disposal, treatment, and management of waste soils
- end-of-life disposal of non-recyclable waste
- listed and hazardous waste
- landfill (municipal solid waste)
- project specific waste
- transport and logistics.



RESOURCECO DEVELOPMENT

- carbon abatement sales and auditing
- environmental management planning
- land rehabilitation and reclamation
- mine and quarry rehabilitation.



THE ASIA TEAM

THE ASIA TEAM

ResourceCo's Asia team is highly experienced in developing alternatives to fossil fuels for use by industry. We are experts in providing unique and practical environmental services and solutions for clients and encourage you to contact one of our dedicated account managers to discuss your needs.

RYCHER LIM

Business Development Director, Asia Operation

Over 26 years' experience in various multinational corporations and start-ups, Rycher has extensive knowledge of sales, business development and logistics. He is responsible for distribution of ResourceCo's products in Asia and holds a Bachelor of Engineering and a Masters in Business Administration.

MURALINDRAN K

Operation Director, Asia Operation

An experienced senior manager with a background in engineering and project management, Muralindran has a wealth of experience in the creation and use of alternative fuel and an extensive background in the cement industry. Muralindran is responsible for the day-to-day operations of ResourceCo Asia, based in Malaysia.

SENAN O'GRADY

Director, OGTEC Engineering Services Ltd

Specialising in mechanical engineering, Senan brings vast experience in designing and constructing alternative fuel processing facilities. He is at the forefront of providing environmentally sound solutions for high energy use industries.



1991	●	ResourceCo founded by S. Brown and incorporated by S. Brown and D. McMahon.
1998	●	ResourceCo created a dedicated mixed waste processing operation.
2001	●	ResourceCo achieves product accreditation for major road project.
	■	ResourceCo commences recycling activities on the combustible fraction of the Commercial and Industrial (C&I) waste stream.
	■	ResourceCo commences research and development to produce PEF from C&I waste
2002	●	ResourceCo achieved state and national Telstra Business Awards.
	■	ResourceCo supplies recycled products to major SA expressway project.
2004	●	Major plant upgrade at main crushing plant.
2005	●	First registered for Quality Assurance. Maintained ongoing QA, OHS&E certification annually, for ISO 9001, ISO 14001 and now ISO 18001 (previously AS4801).
2006	●	Alternative Fuel Company (JV with Adelaide Brighton Cement) constructed at a cost of A\$20m a Processed Engineered Fuel manufacturing facility, first of its kind in Australia.
	■	Onkaparinga Eco Precinct created.
2007	●	Lonsdale Landfill maintenance and southern crushing facility launched.
	■	ResourceCo Concrete business established (Previously Green Star Concrete).
	■	Developed Joint Venture with SITA Australia to create SITA-ResourceCo Alternative Fuels (Now SUEZ-ResourceCo).
2009	●	Waste derived Fill site acquired: Lot 202 Dry Creek.
2009/10	●	Achieved first annual Carbon Neutral certification
2010	●	SUEZ-ResourceCo Victorian facility established
2011	●	Incorporated ResourceCo Asia
	■	ResourceCo Asia alternative fuel processing facility established in Ipoh, Malaysia
2012	●	Aquired national Tyre recycler; Tyrecycle.
2013	●	\$2 million investment in Tyrecycle processing facility upgrade in Perth, Western Australia
2014	●	SUEZ-ResourceCo plant upgrade of approximately \$4 million. Increasing capacity and introducing new technology.
2015	●	Commenced dedicated transport and logistics service business - ResourceCo Material Solutions
2017	●	Obtained funding from CEFC to construct Sydney, Australia PEF manufacturing facility.

GROUP OPERATIONS



ResourceCo Asia

Waste to energy (WTE)
processing plant



ResourceCo Asia

Laboratory for
spectrum analysis



ResourceCo SA & VIC

3 C&D recycling plants
Recycled agg concrete



Southern Waste ResourceCo SA

Landfill



Tyrecycle

Nation-wide
collection network

JAPAN

- Main market for TDF

KOREA

- Main market for TDF

PHILIPPINES

- Main market for PEF

RESOURCECO MALAYSIA

- Ipoh, (PEF manufacturing)
- Port Klang (TDF Depot)
- Main market for TDF

RESOURCECO ASIA

- Singapore

TYRECYCLE

- Perth (TDF)

TYRECYCLE

- Hobart (EOL, Tyre)

TYRECYCLE

- Darwin (EOL Tyre)
- Brisbane (TDF)

RESOURCECO ASIA [AUSTRALIA] TYRECYCLE

- Sydney (PEF, TDF)

RESOURCECO SOUTHERN WASTE RESOURCECO SUEZ-RESOURCECO SA TYRECYCLE

- Adelaide (PEF, TDF, C&D, C&I, Carbon, Concrete, EOL Landfills, Soil Treatment, Energy, Logistics)

SUEZ-RESOURCECO VIC RESOURCECO

- Melbourne (TDF, C&D, Logistics, Soil)

PLANT MANUFACTURING CAPABILITIES



RRF PLANT - SYDNEY

Location:	Sydney, Australia
Operation:	Since 2018
Production Capacity:	250,000mt/year
Waste Stream:	C&I and C&D
Investment Cost:	AUD 30 million

PEF PLANT - ADELAIDE

Location:	Adelaide, Australia
Operation:	Since 2006
Production Capacity:	150,000mt/year
Waste Stream:	C&I and C&D
Investment Cost:	AUD 30 million

PEF PLANT - MALAYSIA

Location:	Ipoh, Perak, Malaysia
Operation:	Since 2011
Production Capacity:	80,000mt/year
Waste Stream:	C&I
Investment Cost:	MYR 14 million

