

# Capability Statement





ResourceCo Material Solutions delivers complete material supply, transport, and disposal solutions for site remediation, rehabilitation and development projects.



# WHO WE ARE

**ResourceCo Material Solutions is a market leader in material supply, reuse, transport and disposal. It is our commitment to environmentally responsible and sustainable practices that sets us apart.**

Working with us, clients can be confident they will receive a total materials solution, tailored to their project site.

Our success stems from extensive market knowledge and networks, proven experience and exceptional quality standards. Our goal is to deliver a successful project on time, on budget, every time.

And we aim to add value throughout the life of the work to help clients realise each site's potential.

We are a proud member of the ResourceCo Group, a leader in using innovative technology to recover and transform waste into useable products.

It is our material reuse philosophy that enables us to reduce the cost of delivering your project, while supplying quality end-to-end solutions.

Our people are professionals with the industry experience, networks and practical know-how to manage the most complex sites.

We operate across all market sectors including residential, industrial, commercial and major infrastructure projects. Among our clients are environmental remediation contractors, small to major civil construction companies, private developers and government authorities.

ResourceCo Material Solutions can tackle any size project and at any stage. From excavating a major construction site or rehabilitating a former quarry, to supplying fill for a community sportsground, we can help.

We are agile and have the presence and capacity to complete projects across Australia. We have a demonstrated ability to attract quality contractors, along with sourcing and managing material supply and disposal solutions in new and evolving markets.

This means our clients benefit from our national perspective and understanding of local operating conditions.



## OUR GROUP STRUCTURE

**The ResourceCo Group (ResourceCo) is an Australian-based, environmental solutions company with a strong focus on resource recovery, waste management, recycling and alternative fuels production.**

Simon Brown founded ResourceCo as a concrete crushing business with one employee in 1992. Today, the company has more than 700 skilled staff, guided by Simon and an experienced management team and Board of Directors.

Our vision is to excel in resource recovery and commercial performance by using innovative technology to transform waste into useable products. The essential philosophy of reduce, reuse and recycle is central to all we do.

Operating nationally and internationally, ResourceCo recycles in excess of 95% of all incoming materials. We are at the forefront of resource recovery, processing more than two million tonnes of material annually.

These materials are recycled and manufactured into a broad range of end products that are resold to construction sector, or are used to generate energy.

Australia's largest national tyre recycler, Tyrecycle, joined the group in late 2012. Tyrecycle collects scrap tyres from many sources for processing into rubber products, rather than going to landfill.

In 2013, Steve Harrison partnered with Simon Brown and David McMahon to establish ResourceCo Material Solutions. It has grown to become a leading provider of material transport, disposal and supply solutions for diverse development projects nationally.

ResourceCo continues to invest in research and development to advance recycling techniques and technology. We pioneered the development of waste-to-energy markets in Australia and Asia.

Through the combined capability of our group, we can provide unique environmental services and solutions for our clients.



**TOMORROW'S SOLUTIONS. TODAY**

We are agile and have the presence and capacity to complete projects across Australia.

[www.resourceco.com.au](http://www.resourceco.com.au)

## DIVISION



Alternative Fuels



Recycling



Soil and Waste Management



ResourceCo Development

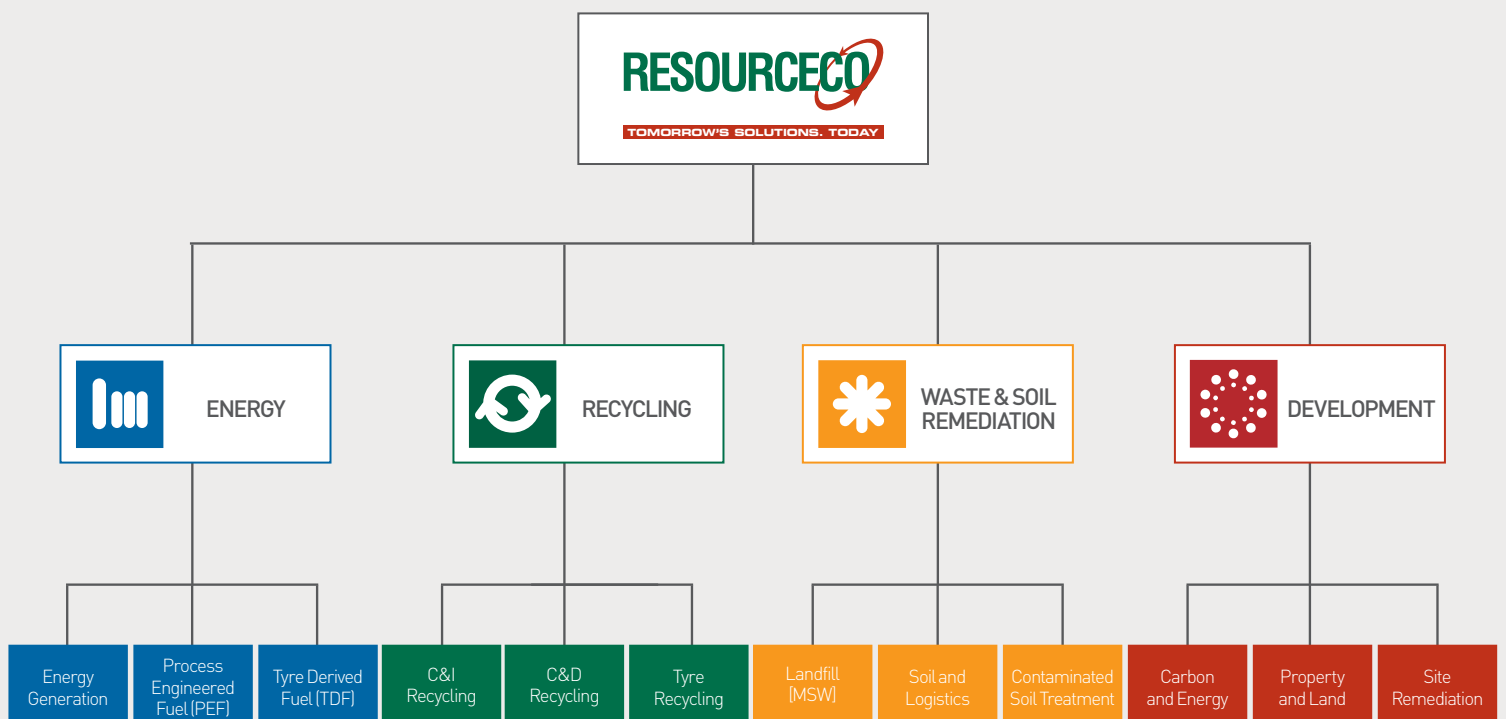
## KEY ACTIVITY

Waste materials manufactured into an alternative fuel source for energy generation

Waste materials manufactured into a range of civil construction products

Recycling and end-of-life disposal for a wide variety of waste streams

A range of environmental solutions





## RESOURCECO MATERIAL SOLUTION'S CAPABILITY



**TRANSPORT  
FLEET  
OF OVER  
1000**  
compliant trucks  
of varying  
specification  
and capacity



**ABILITY  
TO SUPPLY  
LARGE  
VOLUMES**  
of bulk  
structural fills



**BROAD  
RANGE**  
of the best  
disposal solutions  
for all material  
types in the market




**SUPPLY OF  
RECYCLED**  
and virgin products



**SUPPLY OF  
WET HIRE  
EQUIPMENT**  
with experienced,  
qualified operators



A large, conical pile of light-colored, irregularly shaped gravel or crushed stone dominates the lower two-thirds of the image. The pile is composed of many small, angular stones in shades of grey, white, and light tan. The top of the pile is slightly uneven and recedes into the distance. Above the pile, the sky is a clear, solid blue. In the bottom right corner, there is a small green rectangular box containing the white number 7.

We have formed long-term relationships with key suppliers across the industry. If a specific material is available in the market, we know about it.



# TOTAL PROJECT SOLUTIONS

ResourceCo Material Solutions can support the largest civil contractor to a bobcat operator with every aspect of their material management needs. We provide seamless services, from initial site assessment, through to material supply, removal and disposal.

Our technical expertise in earthworks projects, comes from more than 30 years' experience in the industry. We have strong relationships with Australia's largest bulk fill producers and movers, and the proven ability to work to the most intricate material specifications and fill placement plans.

We can supply material, manage the acceptance process, stockpile, or place and compact material. And we have the flexibility to manage the entire process or any part of it to suit your needs. Our stringent Environmental, Safety and Quality Management Systems mitigate the risk associated with large scale fill imports.

Whether you need to solve an erosion problem, provide capping or lining to a landfill cell, rehabilitate a quarry or place fill for future development on a greenfield site, we can help.

Using our expansive market knowledge and supplier networks, we can deliver the best available solutions to meet your project specifications, goals, budget and timeframe. This saves both time and money that you can invest in starting your project.

We are proactive in identifying the inherent value in materials and using our experience in material recycling and reuse to extract that value for our clients. We achieve this by making new products such as recycled concrete or processed top soil. This means we can deliver the best environmental outcome with the most efficient and cost effective result for clients.

## Sourcing the right material

You can rely on ResourceCo Material Solutions to source the products best suited to your project. We have the contacts and buying capacity to supply everything from premium quality recycled products, virgin excavated materials, or quarry products at a competitive rate.

Examples of recycled products include:

- pavement materials
- aggregates
- sands
- bulk fills.

Our technical expertise in earthworks projects, comes from more than 30 years' experience in the industry.





### Keeping your project moving

At ResourceCo Material Solutions we use leading edge approaches to transport. We constantly look for ways to reduce the cost of moving materials and know that timing is critical. Our robust material management system allows us to efficiently coordinate fill supply and disposal.

We manage a modern vehicle fleet operated by experienced and qualified sub-contractors. Carefully selected, they share our work ethic and operate to our strict compliance standards. Together with our skilled team, they play a key role in our exceptional service delivery.

Our transport fleet of more than 1000 vehicles nationally comprises:

- Truck and Tri Axle Trailers
- Truck and Quad Axle Trailers
- Semi-Trailers
- B Doubles and Tandems/  
Bogies
- 8 Wheelers
- 10 Wheelers

We always have the right combination of vehicles available. Whether you need 5000 or five million tonnes of material moved, we have the fleet capacity to keep your project on track.

All vehicles are appropriately licensed, registered and maintained. Our contractors have appropriate insurances and work health and safety policies in place. We manage the contractor risk so you don't have to.

### Environmentally sound disposal

ResourceCo Material Solutions can manage the most complex sites. Ranging from concrete, bricks, asphalt, Virgin Excavated Natural Material (VENM) and Excavated Natural Material (ENM) to contaminated and impacted soils, we offer effective and environmentally sound disposal.

We specialise in dealing with contaminated sites. By involving us as early as possible on your project, we can help to develop best practice plans to manage contaminants. Where feasible, we assess the potential for remediation, beneficial material reuse or recycling.

Our experience includes managing the safe removal, treatment and final disposal of all levels and categories of contaminated material including asbestos.

When required, we have the fleet to transport contaminated waste from source to appropriate disposal sites and/or treatment facilities using accredited, EPA-licensed vehicles.

At every stage of your project, we work closely with you to mitigate risk and deliver cost-effective, environmentally responsible outcomes.

We manage a transport fleet of more than 1000 compliant vehicles nationally.





## OUR APPROACH

Our capability is built on our environmentally smart practices, the skill of our staff, sound supplier relationships and a focus on quality.

Central to our reputation are our people. They appreciate the unique challenges each site presents and share a passion to deliver outstanding results. You can be confident that they have the depth of knowledge, experience and market savvy in transport and materials management to support your project.

We have formed long-term relationships with key suppliers across the industry. If a specific material is available in the market, we know about it.

At ResourceCo Material Solutions, we know that positive project outcomes are built on well-defined systems. This approach means that we can identify and remedy any issues that might occur during your project. Our clients can be certain that we can provide detailed documentation to meet their requirements.

We also understand how our operations could affect the environment and work site safety. To maintain the highest standard of project management and delivery, we complete all work under independent accreditation systems.

By managing environmental risk, we can build a truly sustainable business.





## QUALITY ASSURANCE

ResourceCo Material Solutions is certified to ISO 9001, ISO 14001 and OHSAS18001 for its construction and demolition waste recovery practices. This assures clients that we have comprehensive management systems that meet exacting Quality, Environmental and Occupational Health and Safety standards. Our Environmental Management System Certificate was recently renewed to 2019.

ResourceCo Pty Ltd is a carbon neutral business. In line with the Australian National Carbon Offset Standard, all of our Scope 1 and 2

carbon emissions, with specified Scope 3 emissions, are audited annually and offset. We have an emissions management plan in place to actively reduce our carbon footprint.

Being carbon neutral clearly shows our commitment to resource recovery and in turn, to achieving environmental sustainability in the long term.

All ResourceCo facilities are EPA-licensed and authorised, and meet licensing protocols. Our Group Environmental Manager, Andrew Manning, coordinates all site management and

environmental protocols. This includes managing all licensing approvals and certification requirements.

By managing environmental risk, we can build a truly sustainable business.





# PROJECT PROFILES

## WESTCONNEX



LOCATION:	WestConnex - M5
CLIENT:	CPB Dragados Samsung Joint Venture
CONTRACT:	Cartage and disposal of spoil
DURATION:	2.5 Years

The New M5 will provide twin underground motorway tunnels, nine kilometres long, from Kingsgrove to a new St Peters Interchange at the site of the old Alexandria landfill facility. The St Peters Interchange will provide motorists with connections to Alexandria and Mascot. It also includes connections to the future Sydney Gateway and M4-M5 Link. The New M5 tunnels will be marked for two lanes in each direction, with capacity to add a third and also include underground connection points for the M4-M5 Link and the proposed F6 Extension.

As a subcontractor on the project ResourceCo Material Solutions (RMS) has played a key role in processing and disposing over 3.4 million tonnes of tunnel spoil or around 50% of the material to be generated on the project. Our Fleet of over 40 Performance-Based-Standards (PBS) Quad vehicles, which can carry up to 38-tonnes of materials per load significantly reduce the road transport footprint of the project with the efficiency achieved through this higher carrying capacity.

RMS has been able to re-use the Sandstone and Shale generated from the tunnelling works to assist in cell construction works at the SUEZ Lucas Heights landfill expansion. RMS has also worked closely with Qube in delivering nearly 2 million tonnes of Sandstone to assist in the development of the Moorebank Logistics Park.

When CDSJV encountered design changes and were faced with the significant challenge of moving 260,000 tonnes of waste out of the old Alexandria landfill facility at St Peters RMS was able to provide the most cost-effective cartage and disposal solution. Partnering with SUEZ allowed us to move the waste efficiently and in a timely manner to allow handover of the required areas of the site within the timeframe required.



## FERROVIAL YORK JOINT VENTURE



LOCATION	Frenchs Forest, New South Wales
CLIENT	Ferrovial York Joint Venture
CONTRACT	Material transport and disposal
DURATION	August 2016 – Stage 1

This project at Warringah Road, Frenchs Forest formed part of a \$500 million infrastructure upgrade to improve traffic flow to Sydney's northern beaches and provide access to the area's new hospital due to open in 2018.

Working closely with our client Ferrovial York Joint Venture, ResourceCo Material Solutions was contracted to remove 260,000 tonnes of clay and sandstone in two stages. This included a large volume of classified excavated natural material (ENM) and virgin excavated natural material (VENM).

The material was re-used on sites in northern Sydney that we identified as having development approval, enabling us to meet the project budget for transport and disposal.

To meet daily volume targets, ResourceCo Material Solutions managed a suitably qualified fleet of up to 50 trucks and trailers. All vehicles were inducted with insurances, risk assessments and maintenance records to comply with the strict standards for contractors set by the project's principal stakeholder, Roads and Maritime Services.

We also gained rapid approval to dispose of material with a high level of organic content, including tree roots, that was classified as outside of the original project scope. This avoided any additional downtime and achieved the best commercial outcome for our client.



## PROJECT PROFILES

### BARANGAROO



LOCATION: Crown Project Barangaroo

CLIENT: Ward Civil

CONTRACT: Cartage only

DURATION: 12 months



This project involves complicated logistics as they work with a top down construction plan which is rarely used.

This project also uses containment sheds to ensure the asbestos contaminated soils on the project are handled safely with no adverse effects to the public. Ward Civil were looking for a company capable of handling these significant logistical and safety challenges, a task that ResourceCo Material Solutions handled in their stride.

Overseen by a ResourceCo Site Manager, 30 of our state of the art PBS Quad Axel configuration accredited trucks were able to meet all required safety standards while maximizing productivity and providing real time access to chain of custody on material movement with our GPS monitoring.

### Homebush



LOCATION: Homebush

CLIENT: Ward Civil

CONTRACT: Cartage of 80,000t of material

DURATION: 6 months

Basement Excavation for high rise development.

ResourceCo Material solutions was engaged to supply our PBS rated quads to cart the excavated material to various licensed disposal facilities within Sydney. Project required 30 truck and Quads daily to meet the project completion requirements.



### MOOREBANK



LOCATION: Qube Logistics Park Development project

HOURS: 4:00 am – 7:00 pm

ALL WEATHER ACCESSES

ResourceCo Material Solutions signed an agreement with Qube to import material in 2017 for a volume of 1,000,000.

Due to the performance demonstrated throughout the last 12 months we have been granted an extension for another 2,000,000t and an option to continue for another 2,000,000 in 2019 /20.

To date we have been importing more than 8,000t of material per day to the project.

### LUCAS HEIGHTS



LOCATION: SUEZ Landfill capping project

HOURS: 5:00 am – 5:00 pm Mon/Fri

8:30 am – 4:00 pm Sat/Sun

ALL WEATHER ACCESSES

Stockpiling of sandstone/shale and clay materials  
Volume Stage 600,000 tonnes.

ResourceCo Material Solutions signed an agreement with national suppliers SUEZ to import and stockpile various materials for the future capping works of the Lucas Heights Landfill.

The facility has been established to be an all-weather tip, operating 364 days a year.





## HEAD OFFICE

144-150  
Wingfield  
Road North  
Wingfield  
SA 5013

LONSDALE  
Lot 6 and 6B  
Meyer Road  
Lonsdale  
SA 5160

DRY CREEK  
Waste Derived  
Fill site,  
Hanson Road  
Extension  
Dry Creek  
SA 5094

MALAYSIA  
Lot 149522 Lebu  
Perusahaan  
Klebag 10  
IGB Industrial Park  
30010, Ipoh  
Perak Malaysia

ResourceCo Asia  
Sdn Bhd (KL)  
A-2-15 Plaza  
Damas 3, Block A  
Jalan Sri Hartamas  
50480 Kuala  
Lumpur

ResourceCo Asia  
(M) Sdn Bhd (Ipoh)  
165A, Persiaran  
Kawasan  
Perusahaan IGB,  
31200 Chemor,  
Perak

## MATERIAL SOLUTIONS

MULGRAVE  
Level 3,  
6 Nexus Court  
Mulgrave  
VIC 3170

SYDNEY  
86 Bourke Road  
Alexandria  
NSW 2015

WINGFIELD  
144-150  
Wingfield  
Road North  
Wingfield SA 5013

## PROPERTY

WINGFIELD  
144-150  
Wingfield  
Road North  
Wingfield SA 5013

## ENERGY

WINGFIELD  
144-150  
Wingfield  
Road North  
Wingfield SA 5013

## SOUTHERN WASTE RESOURCECO

McLAREN VALE  
2605 Main  
South Road  
McLaren Vale  
SA 5171

LONSDALE  
Onkaparinga  
Eco Precinct  
19 Christie Road  
Lonsdale SA 5160

TATACHILLA  
Southern Corner  
of Tatchilla and  
Main South Roads  
McLaren Vale  
SA 5171

HARTLEY  
North  
Bremer Road  
Hartley SA 5255

MT COMPASS  
Pambula Road  
Hindmarsh Valley  
SA 5211

## TYRECYCLE

MELBOURNE  
30-56  
Encore Avenue  
Somerton  
VIC 3062  
  
Factory 2  
2 England Street  
Dandenong  
VIC 3175

ADELAIDE  
8 Meyer Road  
Lonsdale SA 5160  
  
26 Cormack Road  
Wingfield SA 5013

BRISBANE  
Lot 1  
Gypsum Drive  
Redbank Plains  
QLD 4301

SYDNEY  
81/85  
Christie Street  
St Marys NSW 2760  
  
36 Stenhouse Drive  
Cameron Park  
NSW 2285

PERTH  
10 Keegan Street  
O'Connor WA 6163

Company  
collections  
number  
(any state):  
1300 829 253

## SUEZ-RESOURCECO

WINGFIELD  
Lot 246  
Wilkins Road  
Wingfield SA 5013

HAMPTON PARK  
Hampton Park  
Resource  
Recovery Facility  
274 Hallam Road  
Hampton Park  
VIC 3976

WETHERILL PARK  
35-37 Frank Street  
Wetherill Park  
NSW 2164

## CLEANAWAY RESOURCECO

☎ **1300 696 733**  
@ [enquiries@resourceco.com.au](mailto:enquiries@resourceco.com.au)  
🌐 [resourceco.com.au](http://resourceco.com.au)

